

Welcome to the second edition of our Stretching Beyond Newsletter by creora®. We are truly committed to excellence in all that we do, including communicating the latest news about our products, our service, our brand and those market trends that will make a difference in your business.

## News stretching beyond • THE MISSION



As we begin 2007, Hyosung continues on-track with its vision to become the world leader in the spandex industry. We remain committed to our mission of providing our customers with superior value so they can compete more effectively in the global textile market.

During 2006, we saw a significant turnaround in the supply/demand balance for spandex resulting in product shortages and rising prices. We recognize that this dynamic caused much stress in the supply chain and wish to thank our customers for their understanding and support through this temporary situation.

We have addressed the creora® supply shortage with additional capacity expansions in our production sites in China and Korea. And Hyosung has finally completed the previously announced acquisition of Tongkook's spandex facility in China. Together these

investments will take our global capacity from 54,000 tons to 65,000 tons.

As we head into 2007, Hyosung plans further global expansion with new products, new production investments overseas and more marketing support to drive local demand for our customer's products. We are pleased to announce our new creora® textile fabric directions, fabric library successes and the launch of a new creora® web site.

We are constantly stretching beyond to deliver value to the industry and to our customers.

Please do not hesitate to contact your local sales person so we can discuss new ways to grow our mutual businesses in 2007.

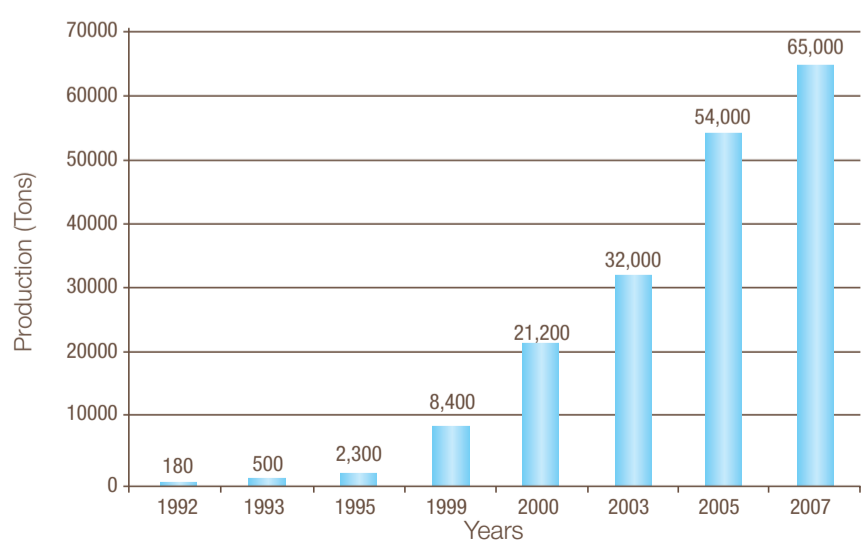


**creora®**  
Commitment to excellence

creora® brand spandex is a yarn developed by Hyosung as a quality, value oriented alternative to competitive brands already on the market. As a result of extensive R&D, creora® has been able to introduce new products consistently attuned to the needs of the market.

Hyosung continues to break new ground providing products whose excellence is seen both in terms of its uniformity and productivity. creora® is also taking a leadership position with its integrated global brand positioning effort. The position "it's in our every fiber", is more than a tag line on advertising. It is the focal point for the second largest spandex manufacturer in the world. This positioning is enmeshed in all aspects of the product and the corporate culture that guides it. It is heartily embraced at all levels of the organization and by all functions. It is the foundation for a rapidly expanding global brand intent on providing superior product, superior service and superior value.

creora®: second largest & fastest growing global spandex producer



- State of the art production capability for cost competitiveness
- Fully localized sales & marketing to service customer needs
- Dedicated to innovation and highest quality

## TEXTILE DIRECTIONS

### Active

#### CORE BEING



With the growing demand of preserving the well-being of our ecosystem a noticeable trend coincides; the focus and interest for the well-being of the body and mind. Recognizing the environment conscious consumer, creora® focuses on blending new sustainable natural fibers such as bamboo, crab yarn, seaweed, Soya, and wood, to deliver stretch, comfort and support that offer built-in benefits for both the consumer and the environment.

#### PRODUCTS

- creora® H-450 brings a natural softness to the new naturals and great stretch and retention
- creora® C-400 is crucial for the increased interest in natural fibers in seamless garments

#### FABRIC TYPES & BENEFITS

- Sustainable fibers – bamboo, Soya, wood, seaweed and chitosan
- Breathable fabrics
- High elastane/spandex content for power fabrics
- Warp and circular knits
- Natural touch
- Fluidity
- Organic structures emerge through rib and piqué constructions
- Jacquards
- Rib knits using contrasting performance synthetics for an optical difference

#### GARMENT APPLICATIONS

- Yoga wear • Spa wear • General wellbeing garments

IMAGINE: SHAPE • CALMNESS • NATURAL • WELLBEING  
• SUPPORT • BREATHABLE



## EXTREME



Multi-functional fabrics combined with comfort and fit in amazing new lightweights are the key requirements for extreme sports as water-proof, windproof, moisture wicking and warmth result in high performance garments that not only protect but allow the wearer to push their activity to the extreme. Surface textures are becoming more elaborate for adrenalin junkies with intense colorways to enhance the look. Functional soft shells are becoming a more accessible option, prepared to react to all changes in exertion and

temperatures offering odor and anti-bacterial protection feature in finishes and more importantly in permanent built-in fibers.

### PRODUCTS

- Combined multi-function – Hyosung's **Aerosilver®** polyester offers permanent moisture control and anti-bacterial performance combined with stretch from **creora®** spandex
- **creora® H-350** offers improved washfastness when blended with synthetic fibers including Hyosung's functional polyester **Aerocool®**
- Hyosung's **Askin®** polyester brings opacity to knits and wovens with built-in UV protection, a soft handle and cool touch

### FABRIC TYPES & BENEFITS

- Waterproof and windproof
- Micro light fleeces with **creora®** rib cuffs and zipper plackets
- Voluminous yet lightweight fabrics and anti-abrasive
- Thermal regulating
- Breathable membranes
- Piqués for base layers
- Polyester ripstops in new constructions

### GARMENT APPLICATIONS

- Mountain climbing • Snowboarding • Hiking • Skiing

**IMAGINE: INVISIBLE BARRIERS • WARMTH • FRESH  
• LIGHT • THIN • STRETCH • COMPACT • STRONG**

## PERFORMANCE PACE



Energized and power stretch second skin functional fabrics that invigorate, embrace and contain the body emerge in new matte and high gloss directions. Seamless and engineered garments feature compression knits that provide a smooth seamless finish, garments offer muscular support with the addition of anti-microbial and moisture managing systems with overall comfort for use in aerobic, gym and yoga apparel.

### PRODUCTS

- **creora® H-350** provides stretch, improved washfastness and quick drying benefits to garments
- **creora® C-400** for seamless garments with zonal power stretch for support
- **creora® H-450** with polypropylene for active second-skin performance in circular and warp knits
- **Aerocool®** moisture management
- Combined multi-function – Hyosung's **Aerosilver®** offers permanent moisture control and anti-bacterial performance

### FABRIC TYPES & BENEFITS

- Super soft stretch micro mesh for inserts
- High power tricot with peach skin touch or brushed surface
- Mock micro mesh
- Irregular ribs using matte/bright synthetics appear textured but are actually flat
- Soft cotton/creora® terry brings added texture

### GARMENT APPLICATIONS

- Active sportswear • Aerobic and gym activities • Supportive garments

**IMAGINE: STREAMLINED • SUPPORT • FLEXIBILITY  
• PERFORMANCE • COMFORT • STRETCH**

## PLEASURE FACTOR



Comfort and function with a high tech and futuristic style stimulate performance stretch fabrics. Lightness is key without neglecting the full range of functions as well as high performance stretch and recovery achieved from **creora®**. The inclusion of temperature regulating performance fabrics ensures that garments, especially base layers, transcend seasons keeping you warm when it is cold and cool when it is hot. Soft shells with **creora®** offer greater flexibility and a full range of functions to the wearer under varying conditions through lightweight garments. New micro fibers include bright polyamide/nylon combined with added brilliance in peach skin qualities creating windproof and breathable functions and at the same time offering the ultimate in comfort and protection.

temperatures offering odor and anti-bacterial protection feature in finishes and more importantly in permanent built-in fibers.

### PRODUCTS

- **creora® H-350** blended with the latest high-tech synthetics delivers lightweight, comfortable and quick drying fabrics with improved washfastness
- **creora® H-100D** black elastane offers intense blacks as well as stretch and recovery
- **creora® H-100D** can also be used to create heathered effects when teamed with colors in circular and warp knits
- **creora® C-400** for seamless garments
- **creora® H-450** blended with polypropylene in wovens and knits for the lightest functional fabrics available
- Hyosung's **Askin®** brings windproof softness with UV protection
- PES and **MIPAN®** nylon/polyamide micro fibers

### FABRIC TYPES & BENEFITS

- Ripstop with exaggerated slub detail
- Light reflecting fibers
- Compression knits offer muscular support

### GARMENT APPLICATIONS

- Golfing • Walking • Cycling • Easy pack garments

**IMAGINE: SHELTERED • PROTECTIVE • MULTI FUNCTIONAL  
• SHIELD • SUPPORT • ANIMATE**

## Intimates

### DECORATIVE DESIRE



A host of inspirations from urban chic to gothic desire leads to a more decorative expression in lingerie. From microfiber stretch mesh to moldable stretch lace, surface textures come to the forefront.

The featherweight mood infiltrates through veil-like microfibre stretch tulle for embroidery and print bases. The demand for brilliance of color in fabrics leads the way to tri-lobal synthetics creating a luxurious and intense satin and high gloss feel through micro flat jacquards that look deceptively textured.

Amore opulent finish is achieved through burnout.

### PRODUCTS

- **creora® H-250** enhances the silky aspect of this decorative yet light trend when blended with micro fibers
- Burnout - **creora® H-100X** alkali resistant spandex/elastane for a plush and decorative finish
- Jacquard spacer fabrics - **creora® H-450** low heat settable spandex/elastane for molded cups
- **MIPAN®** colorist for 2 tone effects

### FABRIC TYPES & BENEFITS

- Raised lace motifs and exaggerated open grounds
- Fancy jacquards – optical yarn use
- Contrast bright and matte synthetics for a 3D look yet flat finish
- Moldable lace
- Laser cutting for a clean finish

### GARMENT APPLICATIONS

- Structured bras • Molded lace cups • Decorative details
- Seductive intimates • Sleepwear

**IMAGINE: DECORATIVE • OPULENT • LUXURY • SATIN  
TOUCH • GLAMOUR • EXPRESSIVE • FLORAL**

### NATURAL CHARM



Environmental issues take the forefront as the focus on nature and respecting the environment becomes a part of everyone's daily life. Cotton featured as the staple fiber in processed and organic qualities with new sustainable natural fibers from sources of Soya, bamboo, seaweed and wood are emerging in intimate apparel. Fabrics must have a natural and raw hand feel although they don't necessarily have to be natural in origin. Also of interest is recycled synthetic polypropylene and polyester delivering lightweight fabrics and built-in performance that compliment the growing ecological mood.

### PRODUCTS

- **creora® H-450** brings a super soft finish to lingerie with a lower heat settable spandex/elastane that is ideal to be teamed with delicate naturals including silk, **Modal®** and bamboo
- New natural compositions with **creora® C-400** elastane/spandex for the seamless sector

### FABRIC TYPES & BENEFITS

- Natural touch
- Organic cotton

- Soya, bamboo, milk, silk, wood, viscose all feature in the eco-trend
- Recycled and eco friendly processed synthetics
- Circular and warp knits
- Micro mesh
- Micro jacquards

#### GARMENT APPLICATIONS

- Smooth support • Multi-functional camisoles • Long lasting basics
- Seamless intimates for men and women

**IMAGINE: NATURAL • PURE • RENEWABLE • SOFT • GRAINY  
• RAW • TEXTURED • SAFE • COMFORT**

## SIMPLY SENSUAL



Featherweight fabrics continue to dominate the lingerie scene as fine denier creora® yarns are incorporated into barely-there fabrics. Smooth micro fiber seamless, circular and warp knits emerge in ultra fine qualities in matte, diaphanous and newly decorative jacquard options. Not just confined to the knit sector, development in the woven field is resulting in wispy lightweight finishes with power stretch and support. The resulting fabrics feel luxurious to wear, with the feeling of second skin that offers comfort and support

with the added ability of thermo molding for seamfree cups. Fabrics in this category vary from sheer, to the latest trend of matte and decorative finishes.

#### PRODUCTS

- Super fine denier creora® for seamless, circular and warp knit
- Contrasting matt/brilliant MIPAN® micro fibers reflect the light
- creora® C-400 offers longer lasting whites and brighter colors for seamless
- creora® H-100D for absolute blacks as well as creating new gritty tonal effects when teamed with colors

#### FABRIC TYPES & BENEFITS

- New decorative micro jacquards
- Transparent and opaque warp and circular knits
- Satin/matte combinations provide an optical finish
- Fancier seamless garments with rib and jacquard effects
- Featherweight stretch wovens

#### GARMENT APPLICATIONS

- Second skin intimates • Body shaping support – new fancier variable modulus fabrics with power zones • Seamfree molded cups and 3D spacers • Basic foundations - Day lingerie • Seamless styles

**IMAGINE: BARELY THERE • EMBRACE • SUPPORT •  
SECOND SKIN • DECORATIVE • SHEER • SEDUCTIVE**

## SPORT SENSATION



Fit, freedom and support all backed with added-value performance including anti-microbial finishes and moisture management systems are essential for working out. Built-in function is vital in the active bodywear sector for sports with interest in permanent functions including silver gaining ground. These fabrics deliver the functions and do not detract from the wearer's performance. Look to knitting in permanent anti-bacterial yarns into crotch panels and underarms on camisoles and vests in the seamless sector and compression

zoning for extra support where it is needed.

#### PRODUCTS

- creora® H-350 blended with performance synthetics brings through improved wash fastness and performance
- creora® H-450 low heat settable elastane/spandex for sporty long lasting whites
- Moisture management with Aerocool® nylon and polyester

#### FABRIC TYPES & BENEFITS

- Permanent locked-in performance – increased garment longevity
- Stretch and support
- Anti-bacterial power mesh
- All-over power fabrics and zonal compression
- Quick dry, Anti-bacterial, Anti-odor
- New bi-stretch qualities

#### GARMENT APPLICATIONS

- Sports bras
- Compression zone support in bra tops and shorts
- Camisoles with built-in support
- Extra zonal support through variable modulus elastane/spandex placement in shorts and sports briefs

**IMAGINE: COMFORT • PERMANENT PERFORMANCE • SUPPORT  
• SEDUCTIVE STYLES • LIGHTWEIGHT • POWER ZONES**

# STRETCHING BEYOND

## creora® specialities

Our "commitment to excellence" guides the creora® business from servicing its client's global needs to developing new and innovative methods of research and development. This dedication is what leads Hyosung to create a consistently high level range of new products for today's demanding market.

### Feel the heat

#### High Heat resistant creora® H-350

creora® H-350 provides both aesthetic and economic benefits to all those who use it. Providing:

- Lasting power, fit and freedom of movement
- Vibrant long lasting colors
- Chlorine resistance
- Wash fastness when blended with polyester
- Package-to-package consistency
- Excellent knitting efficiency

#### Improved Wash Fastness

The higher temperature dyeing gives better wash fastness in Polyester fabric regardless of the type of dye applied

Dye	125°...	135°...
	Blue (E)	W A P N C D
Blue (SE)		
Red (S)		

• Fabric: Circular Knit (PET 75d + creora® 20d)  
 • Dyes: Regular disperse dye  
 • Dyeing: 1/1 Standard Depth Dyeing  
 • Fastness Test Method: ISO 105 C06/ C2S (60°...)  
 W: Wool A: Acryl P: PET N: Nylon C: Cotton D: Diacetate

### The best of both

#### Steam set creora® C-400

creora® C-400: a steam set technology that:

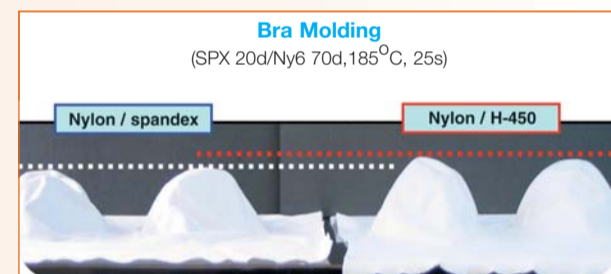
- Reduces shrinkage
- Minimizes yellowing

creora® C-400 gives garments:

- Whiter more vibrant whites
- A hand soft to the touch

When used in steam-settable garments for hosiery, socks and seamless:

- Products remain comfortable and wearable longer
- Shrinkage is reduced
- Hand remains soft to the touch



### Low heat set creora® H-450

creora® H-450's unique innovative design:

- Provides manufacturers a wide array of useable options in blends with natural fibers: cellulose, cotton, wool and silk and synthetic fibers: nylon, acrylic, acetate, rayon, modal, polypropylene and PTT
- Provides easier and better moldability
- Improves the product hand and delivers whiter whites with less fabric yellowing and curling



### Absolute black

#### Blacker than black creora® H-100D

creora® H-100D is a black solution dyed elastane/spandex for:

- Intimate apparel
- Activewear
- Hosiery
- Seamless
- Ready-to-wear



#### For blacker blacks that are always trend right and more luxurious

- Deeper darker shades
- Elimination of shiny grin-through
- Excellent coloration
- Colour uniformity after molding



Example from power-net construction.

# RENDEZ-VOUS



## Salon Internationale de la Lingerie / Interfilere

Parc des Expositions  
Paris France  
**2 - 4 February 2007**  
Hall 1 - Stand B78/C83

## ISPO

Messe Muenchen  
Munich Germany  
**8 - 10 July 2007**  
BrandNew NewBrand

## Fenatec

Anhembí  
Sao Paulo - Brazil  
**27 February - 2 March 2007**

## PID

Preview in Daegu  
Daegu - Korea  
**16 March 2007**

## IDEA 2007

Miami Beach Convention Center  
Miami - USA  
**24 - 26 April 2007**  
Stand 2370

## ISPO

Messe Muenchen  
Munich Germany  
**8 - 10 July 2007**  
BrandNew NewBrand

## Lyon Mode City / Interfilere

Eurexpo  
Lyon - France  
**1 - 3 September 2007**

## ITS

Shanghai - China  
**29 October - 1 November 2007**

# Launch of the ▶ new web site

creora® is proud to introduce you to its new web site. On-line at the end of January, this web site is dedicated to textile professionals who need quick, detailed and useful information on creora®, applications, portfolio, technical information and contacts.

Please come and visit [www.creora.com](http://www.creora.com).



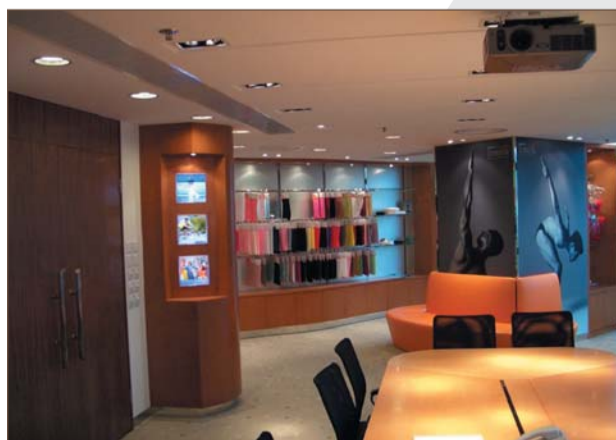
# Fabric Libraries

With more than 1200 global fabric samples in 2006, the libraries and the fairs helped our direct customers as well as the brands and retailers to source innovative fabrics all around the world. Fabric marketing services have been one of our offerings to create demand for creora® partner mills.

Fabric showrooms globally create the link between buyers, retailers, brands and fabric manufacturers. The creora® marketing team helps customers find the best fabrics and developments around the world through our wide network of partners.

Today buyers can visit 5 show rooms in Milan, Hong Kong, New York, Seoul, Shanghai as well as our stand at international fairs. We welcome...

- ADIDAS
- TRIUMPH
- MARKS & SPENCER
- ARMANI JEANS
- PRADA SPORT
- SLAM
- CHRISTIAN DIOR
- VANITY FAIR
- GAP/GAP BODY
- MAIDENFORM
- TOMMY HILFINGER
- DIM
- LI & FUNG
- UNDERAMOUR
- REEBOK
- DOLCE & GABBANA
- VICTORIA'S SECRET
- TESCO
- HANES...



• Show room Hong Kong •

# STRETCHING BEYOND contacts

## North America

Hyosung America, Inc.  
One Penn Plaza, Suite 5320  
250 West 34th Street  
New York, NY 10119, U.S.A.  
Tel : +1 212 736 7100  
Fax : +1 212 563 1323  
[rstern@hyosungny.com](mailto:rstern@hyosungny.com)

## South America

Hyosung Do Brasil  
Av. Pailista 1439 Conj, 154 (15/F)  
San Paulo Sp, Brazil  
Tel : +55 11 3284 6466  
Fax : +55 11 3285 1957  
[fernando.roland@hyosung.com.br](mailto:fernando.roland@hyosung.com.br)

## Europe

Hyosung Europe  
Via del Tecchione, 34  
20098 San Giuliano Milanese (MI) - Italy  
Tel : +39 02 98 862 521  
Fax : +39 02 98 28 4262  
[stephanie.ledru@hyosung-europe.it](mailto:stephanie.ledru@hyosung-europe.it)

## Korea

Hyosung Corporation  
450, Gongdeok Dong, Mapo Gu  
Seoul, Korea, 121-720  
Tel : +82 2 707 7115  
Fax : +82 2 707 7103  
[tnc-jwlee1@hyosung.com](mailto:tnc-jwlee1@hyosung.com)

## China

Hyosung Shanghai  
7E22, Shanghai Mart, 2299 Yan'an Road, West.  
Shanghai 200336 - PR China  
Tel : +86 21 6236 3322  
Fax : +86 21 6236 1126  
[davidai611@gmail.com](mailto:davidai611@gmail.com)

## Hong Kong

Hyosung HK  
Unit 1918, 19/F.  
Miramar tower  
132 Nathan Road  
Tsimshatsui - Kowloon, HK  
Tel : +852 28 259810 / 28259813  
Fax : +852 2868 2510  
[simonje@hyosung.com.hk](mailto:simonje@hyosung.com.hk)  
[conniecheng@hyosung.com.hk](mailto:conniecheng@hyosung.com.hk)